



**REPI**

UNITED STATES DEPARTMENT OF DEFENSE  
READINESS AND ENVIRONMENTAL PROTECTION INTEGRATION PROGRAM

# **Collaborative Conservation Partnerships**

## **Readiness and Environmental Protection Integration (REPI) Program Overview**

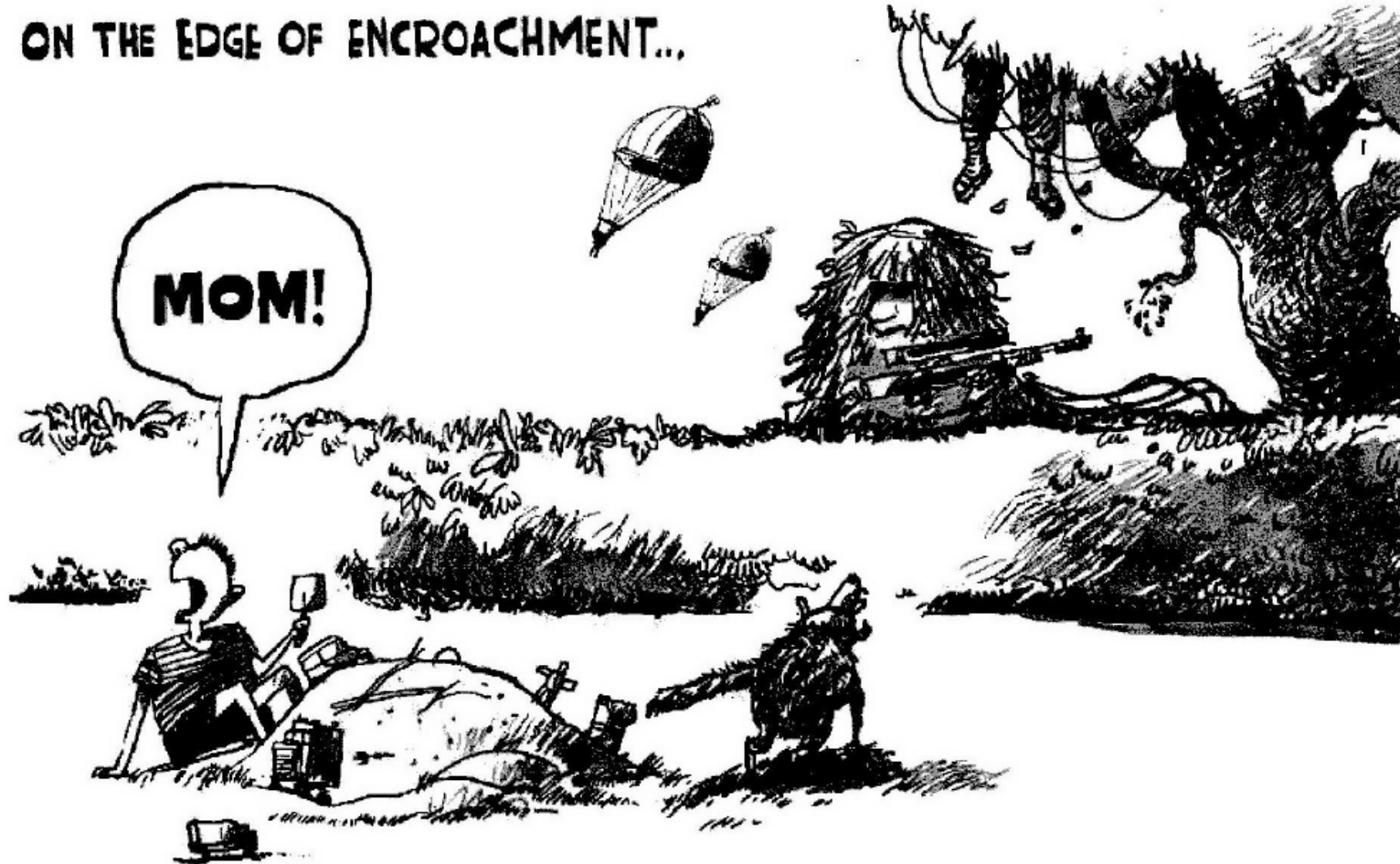
**Dec 6, 2016**

Ryan Orndorff  
REPI Deputy Program Director  
OASD (EI&E)/Basing Directorate



# The Problem: Encroachment

ON THE EDGE OF ENCROACHMENT...



**CM TERRY**  
NORTHWEST FLORIDA DRAPERY & MORE



# The Problem: Encroachment





The Department of Defense's Readiness and Environmental Protection Integration (REPI) Program is a key tool for promoting innovative and land conservation partnerships that benefit national defense, neighboring communities and the environment.



Parachute training is halted when housing developments are built near drop sites

Realistic combat training, pristine test environments, and operational capability are keys to keeping our service members safe. However, encroachment issues are creating obstacles that threaten military activities.



Flight testing, training, and operations are impeded by cellphone towers, wind farms, and developments

**80%** of military bases have surrounding development that is higher than the national average



Weapons testing and training causes noise, dust, and smoke complaints from nearby communities



Night training is compromised when light pollution from nearby commercial areas spreads

Urban sprawl decreases habitat and may cause Federally protected species to seek sanctuary on military lands





# The Problem: Encroachment

CONFLICT



COLLABORATION



1990



2001





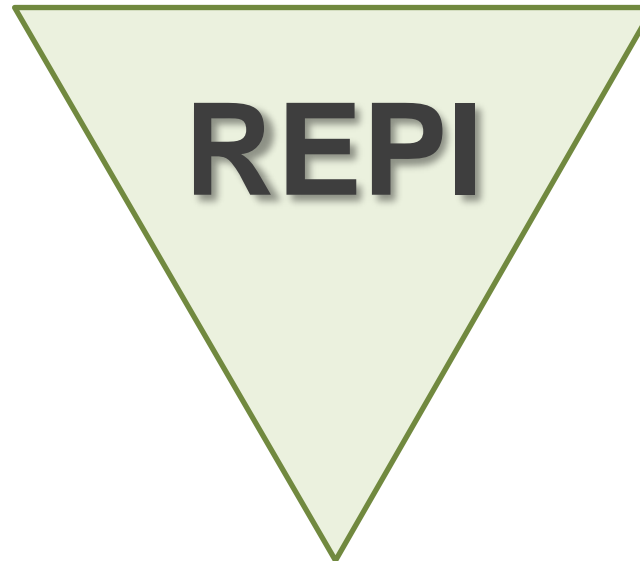
# What is REPI?

**Mission:** to protect the military's ability to accomplish its training, testing, and operational missions by helping remove or avoid land-use conflicts near installations and addressing regulatory restrictions that inhibit military activities.

## Landscape Partnerships



AMERICA'S  
LONGLEAF



## Buffer Partnerships

## Stakeholder Engagements





# Buffer Partnerships





# REPI Program Focus Areas



**Increase REPI Funding:** Build REPI budget to sustainable level and work with private and public sources for strong and diversified cost share



**Advance REPI Policy:** Ensure OSD policy for DoD Components includes key REPI policies, tools, and structures, and institutionalizes REPI responsibilities.



**Invest in Large Landscape Partnerships:** Leverage existing partnership, especially the Sentinel Landscapes Partnership, to prevent land use incompatible with DoD's mission and support regulatory solutions that favor DoD's mission



**Explore Off-installation Regulatory Solutions:** Find regulatory solutions to species protection issues that incorporate off-base habitat, and disseminate knowledge of particular regulatory solutions across DoD and other communities.



**Accelerate Buffer Results:** Advance key partnerships, new initiatives such as the REPI Challenge, and other REPI tools (including the REPI Database) to strategically focus use of REPI funding and accelerate measurable results.





# REPI Authority - 2003 (10 U.S.C. § 2684a)

## **Authorizes agreements to acquire:**

1. Real property interests or water rights
2. For property in the vicinity of, or ecologically related to,
3. A military installation, range or airspace

## **Also authorizes:**

1. Management of natural resources
2. Funding for long term stewardship

## **Two-pronged justification:**

1. Limit development or use of the property that is incompatible with the installation's mission  
and / or
2. Preserve habitat to relieve current or anticipated environmental restrictions on military activities



# REPI Authority - 2003 (10 U.S.C. § 2684a)

## **Eligible Partners:**

- A state or political subdivision of a state, or
- A private entity that has as its stated principal organizational purpose or goal the conservation, restoration, or preservation of land and natural resources
- Can be a 501(c)(3) non-profit organization or a for-profit conservation organization

## **Congressional intent:**

1. Willing sellers only
2. Cost share with partners
3. Flexibility on agreements
4. Robust selection process
5. Annual reporting



# Other Authorities

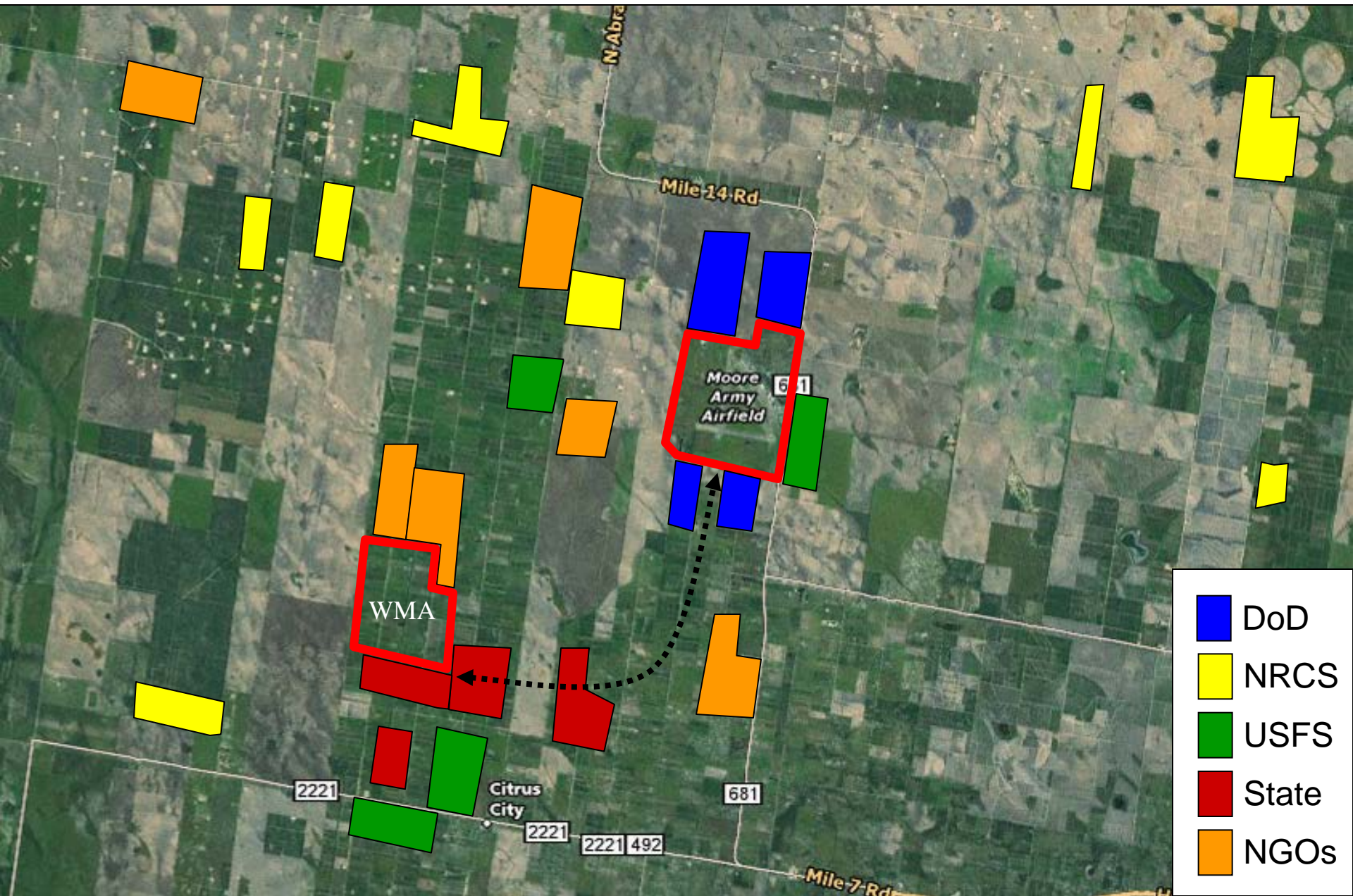
- Sikes Act (16 U.S.C. § 670 c-1)
  - Authorizes agreements for maintenance or improvement of natural resources **off** military installations when doing so may relieve current or anticipated environmental restrictions on military activities
  - Allows for long term management agreements
- Conservation Banking (ESA) – (10 USC § 2694c)
  - Authorizes use of credits from approved conservation banks or in-lieu fee programs
- Mitigation Banking (CWA) – (10 USC § 2694b)
  - Authorizes use of credits from approved mitigation banks of in-lieu fee programs





# Landscape Partnerships

# Linking Lands...Linking Missions





# Sentinel Landscape Partnership

- The U.S. Departments of Agriculture, Defense and the Interior announced the Sentinel Landscapes Partnership in 2013, a nationwide federal, local and private collaboration dedicated to promoting natural resource sustainability



**SENTINEL  
LANDSCAPES**

- The Partnership identifies shared interests within a landscape and coordinates mutually beneficial programs and strategies to preserve, enhance or protect habitat and working lands within a military mission footprint





# Sentinel Landscapes

## SENTINEL LANDSCAPES



Joint Base  
Lewis-McChord  
Sentinel Landscape



Camp Ripley  
Sentinel Landscape



NAS Patuxent River-Atlantic Test Ranges  
Sentinel Landscape

Eastern North Carolina  
Sentinel Landscape



Fort Huachuca  
Sentinel Landscape



Avon Park Air Force Range  
Sentinel Landscape







# Collaborative Ecosystem Restoration

## America's Longleaf Restoration Initiative



- Goal: 8M acres by 2025
- Comprehensive Plan released in March 2009 that identifies Significant Geographic Areas
- Developed by Regional Working Group representing 22 organizations
- Collaborative implementation among US Departments of Agriculture, Defense and Interior
- Engages a 33 member Longleaf Partnership Council
- Includes Local Implementation Teams
- Longleaf Stewardship Fund
  - Administered by NFWF
  - Coordinates funding from federal agencies and other sources (i.e. State, private)





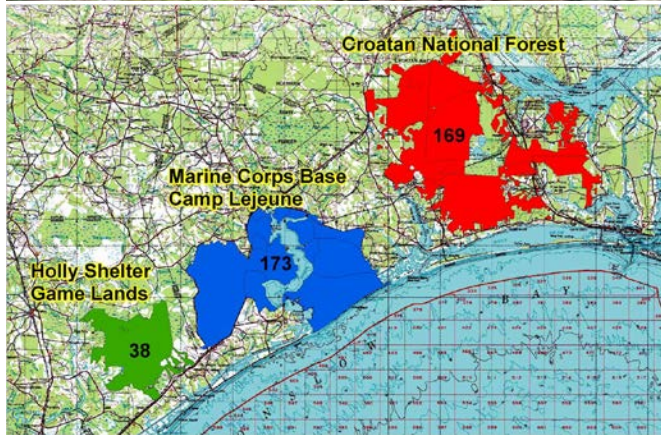
# Exploring Regulatory Solutions



# Species Recovery

## MCB Camp Lejeune:

## RCW Recovery and Sustainment Program



- Red-cockaded Woodpecker (RCW) management requirements result in significant mission restrictions (i.e. restricted off-road maneuver and live fire exercises, range management and maintenance, etc.). These restrictions preclude the ability for Marine units to achieve core competencies for mission readiness which depend on utilization of the ranges and training areas.
- The RASP is supported by a Programmatic Biological Opinion (7(a)(1)), which establishes criteria, standards and guidelines for achieving recovery actions on non-federal lands
- USMC will employ authorities under 10 USC 2684a (aka REPI authority) to implement recovery actions for RCW on off-base lands.
- Three key requirements: Biological Function, Permanent Land Conservation, “In-Perpetuity” Management
- Each Active Cluster contributing to the overall goal of the recovery unit will reduce the specific recovery goal on the base providing a broader landscape in which to balance training and species needs.



# Candidate Conservation

## Gopher Tortoise

### Range Wide Conservation Credit Strategy



- Gopher tortoise is a Candidate species being considered for listing under the ESA in the Eastern portion of its range.
- DoD Installations support significant populations and are actively managing for habitat and species conservation in support of a Candidate Conservation Agreement (CCA) as implemented through Integrated Natural Resource Management Plans (INRMP). If the species is listed the impacts to readiness activities are unknown.
- DoD/FWS/States are working to establish a “credit” system for establishing off-base “Gopher Tortoise Conservation Areas” (GTCA) – **in progress**
- A GTCA would support or be capable of supporting a “Minimum Viable Population” based on soil and habitat conditions, be permanently protected and managed in accordance with established criteria.
- “Credits” would be used to off-set impacts of readiness activities and maintain on-base land use flexibility by providing a net-conservation benefit.
- The ultimate goal is to affect enough conservation to preclude the need to list the species.





# A Holistic Approach: Brining it together





# Questions & Discussion

**For more information, visit our website:**

**<http://www.REPI.mil>**

**<https://www.sentinellandscapes.org>**