

THREATENED AND ENDANGERED SPECIES TEAM WORKSHOP ON ESA SECTION 7(A)(1) CONSERVATION PLANNING IN THE SOUTH PACIFIC DIVISION

6-7 December 2016

**U.S. Army Engineer Research and Development Center,
Environmental Laboratory**

U.S. Army Engineer District, Los Angeles

American Bird Conservancy

Marine Corps Base Camp Pendleton

In Coordination With: U.S. Fish and Wildlife Service



**US Army Corps
of Engineers®**
Engineer Research and
Development Center



Section 7(a)(1) Conservation Planning in Southern California

Objectives: The ERDC Environmental Laboratory will host a workshop in southern California during 6-7 December to seek opportunities for implementing Endangered Species Act Section (ESA) 7(a)(1) conservation planning for federally listed species. This is an opportunity for USACE, USFWS, DoD military services, and other federal agencies to come together to explore partnerships that could lead to win-win scenarios for agency missions, streamline Section 7(a)(2) consultation processes, and improve outcomes for listed species. The workshop format will include focused presentations by national and regional experts on ESA and listed species conservation, followed by facilitated discussions that focus on opportunities.

Sponsors: U.S. Army Engineer Research and Development Center, Environmental Laboratory; workshop conducted in coordination with the U.S. Army Engineer District Los Angeles, American Bird Conservancy, and the U.S. Fish and Wildlife Service.

Workshop Location: The workshop will be held Tuesday and Wednesday, 6-7 December, 2016, at Marine Corps Base Camp Pendleton, CA, 22 Area, CNATT Facility, Building 2220. Auditorium #2 is on the 1st floor. **See maps below and access instructions.**

Parking: Parking is available behind the CNATT Facility on 2nd and 3rd deck of parking structure. Please respect all reserved parking spots.

Base Access:

- All persons entering the Base must have valid ID, e.g. State Driver's License, Passport or Federal Employee ID.
- If you have a Common Access Card (CAC) or similar Federal Government photo ID card you should be readily admitted through the access gates.
- For non-Federal attendees, use the Visitor Lane. The gate guards should have a roster of non-Federal class participants. Tell the guard that you are here for the Endangered Species Workshop.
- If you are driving your personal vehicle, be sure to have valid driver's license, vehicle registration and proof of liability insurance.
- Call the Environmental Security Office 760-725-4512 if you are not admitted.

Section 7(a)(1) Conservation Planning in Southern California

Directions: See attached maps below.

Lodging:

On Base: For those looking for on-base lodging opportunities, see this website:
<http://www.mccscp.com/inns>

The Pacific Views Lodge is the nicer location but tends to have no vacancy.

The Ward Lodge is a little bit closer to the training site and is more likely to have rooms.

Be sure to call for availability.

Off Base: Listed below are a few hotels in the vicinity of MCB CP. Please inquire with the hotels at time of reservation for government or best available rate. DTS Hotel allowance for Oceanside is \$149.00 during December.

Courtyard San Diego Oceanside: Address: 3501 Seagate Way, Oceanside, CA 92056

Phone:(760) 966-1000

Ramada Oceanside: Address: 1440 Mission Ave, Oceanside, CA 92058

Phone:(760) 967-4100

Comfort Suites Oceanside Marina: Address: 888 N Coast Hwy, Oceanside, CA 92054

Phone:(760) 722-8880

Holiday Inn Oceanside Camp Pendleton: 1401 Carmelo Drive, Oceanside, CA 92054

[760-231-7000](tel:760-231-7000). This Holiday Inn is just outside the Main Gate and should have rooms at or below per diem.

www.ihg.com/holidayinn/hotels/us/en/oceanside

Section 7(a)(1) Conservation Planning in Southern California

DAY 1 - TUESDAY – December 6, 2016	
8:45 – 9:00	Sign-in
PLENARY SESSION	
9:00 – 9:15	Objectives and Meeting Structure – Richard Fischer, U.S. Army Engineer Research and Development Center, Vicksburg, MS <ul style="list-style-type: none"> - Roles of facilitator, presenters, and participants - Meeting objectives and review of agenda
9:15 – 10:00	USFWS and ESA Section 7(a)(1) – Paul Hartfield, USFWS Mississippi Field Office, Jackson, MS <ul style="list-style-type: none"> - USFWS Perspective on ESA Section 7(a)(1) - Lower Mississippi River Conservation Planning
10:00 – 10:30	The USACE Threatened and Endangered Species Team Approach: ESA Section 7(a)(1) and Conservation Planning for listed species – Richard Fischer, USACE
10:30 – 10:45	BREAK
10:45 – 11:30	Rangewide Conservation Planning: ESA Section 7(a)(1) and the Recovery of the Interior Least Tern – Casey Lott, American Bird Conservancy
11:30 – 11:50	What it Takes to be Successful in Pursuing Section 7(a)(1) Programs - Stephen Ricks, USFWS Mississippi Field Office, Jackson, MS
11:50 – 12:15	Q/A and Open Discussion
12:15 – 1:30	LUNCH
FEDERAL AGENCY INITIATIVES AND PROGRAMS	
1:30 – 1:45	Natural Resources Conservation Service – The Working Lands for Wildlife Initiative. Thomas Moore, CA State Wildlife Biologist, USDA Natural Resources Conservation Service, Davis, CA
1:45 – 2:00	Department of Defense REPI and the Cooperative Wildlife Protection and Recovery Initiative – Ryan Orndorff, Department of Defense, Readiness and Environmental Protection Initiative, Washington, DC
2:00 – 2:15	NOAA and Federally Listed Species – Ron Salz, NOAA National Marine Fisheries Service
2:15 – 2:30	BREAK
Species-Specific Presentations and Facilitated Discussion	
2:30 – 2:40	Least Bell’s Vireo – Abundance, Distribution, and Status Overview. Peter Beck, Carlsbad Fish and Wildlife Office, USFWS
2:40 – 3:15	Integration, Progress, and Challenges to Regional ESA Section 7(a)(1) Conservation Planning: Least Bell’s Vireo at Whittier Narrows and Prado Dam, Southern California – Tom Keeney, USACE Los Angeles District
3:15 – 4:15	Facilitated Discussion: Least Bell’s Vireo conservation planning – ideas, opportunities, partnerships, science needs, etc.

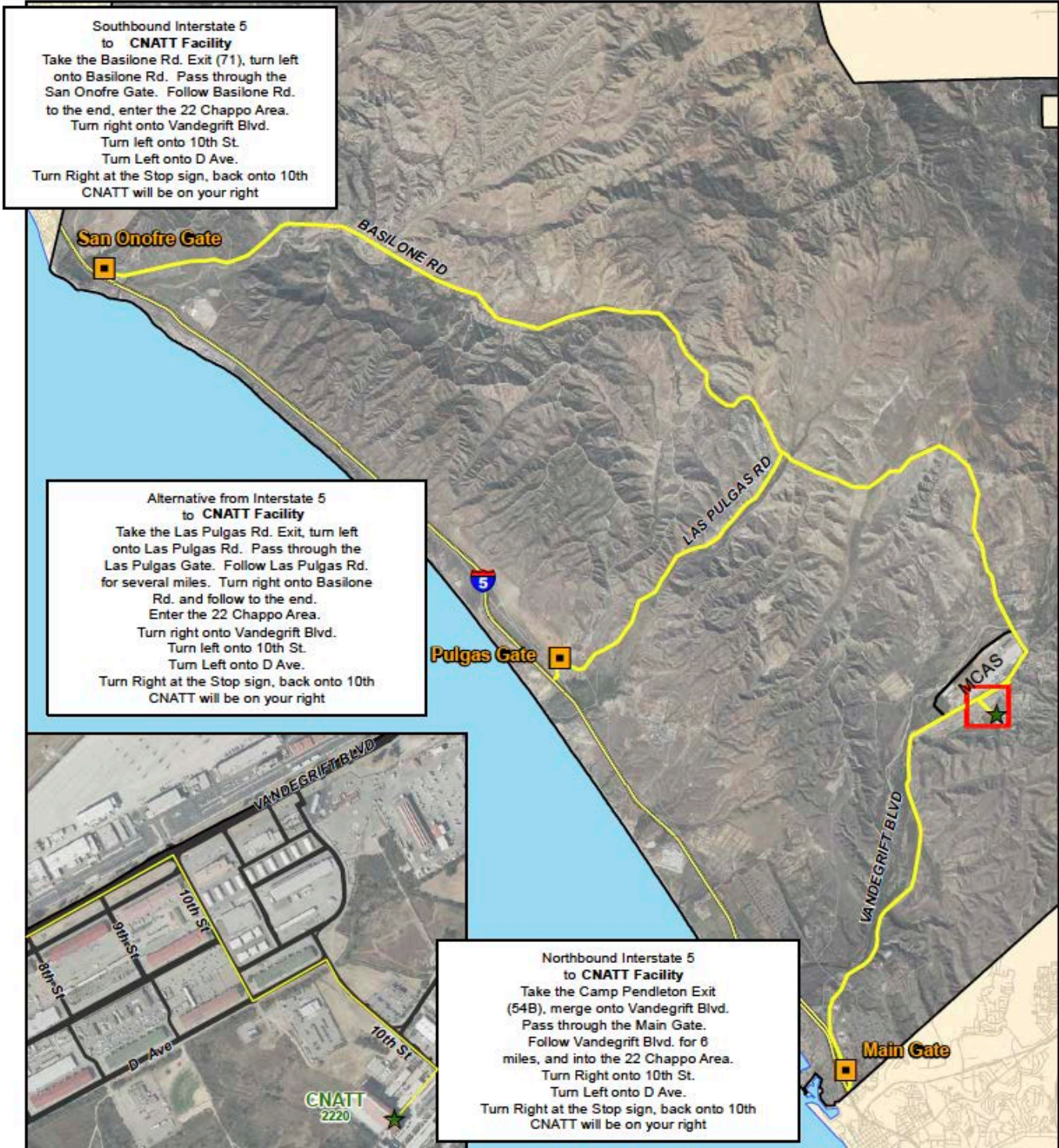
Section 7(a)(1) Conservation Planning in Southern California

4:15 – 4:30	Wrap-up and Setting Stage for Day 2
--------------------	--

DAY 2 – WEDNESDAY, December 7, 2016	
8:30 – 8:45	Summary of Day 1 (Hartfield/Fischer)
8:45- 8:55	Tidewater Goby – Abundance, Distribution, and Status Overview. Peter Beck, Carlsbad Fish and Wildlife Office, USFWS
8:55 – 9:30	Tidewater Goby on Marine Corps Base Camp Pendleton — (Sherri Sullivan, MCB Camp Pendleton)
9:30 – 10:30	Facilitated Discussion: Using the Tidewater Goby as an example to explore conservation planning and partnerships for species recovery
10:30 – 10:45	BREAK
10:45 – 12:15	Conservation Planning and Listed Species – Open Discussion and opportunity for anyone in attendance to bring forward issues and/or opportunities regarding listed species
12:15 – 1:30	LUNCH
1:30 – 3:00	Open discussion of Section 7 opportunities <ul style="list-style-type: none"> - Possible examples include Western Yellow-billed Cuckoo, Delta Smelt, Stephen’s Kangaroo Rat, Arroyo Toad, or any other federally listed species of interest within the region
3:00 – 3:30	Summary, Wrap-up and Action Items
3:30	End of Workshop

Section 7(a)(1) Conservation Planning in Southern California

Directions to CNATT Facility, Bldg 2220



Section 7(a)(1) Conservation Planning in Southern California

Directions to CNATT Building 2220 – MCB Camp Pendleton

1. Exit I-5 at Camp Pendleton exit and proceed to Main Gate.

2. After clearing the gate (see below) proceed straight ahead. You are now on Vandegrift Blvd.

3. Continue on Vandegrift Blvd ~5.5 miles from the Main Gate to the 22 Area. Warehouses on the right, flood wall on the left.

4. See next page for detailed directions within 22 Area

- All persons seeking entry to the Base must have valid ID, e.g. State Driver's License, Passport or Federal Employee ID.
- If you have a Federal Government photo ID card (e.g. CAC) you should be admitted through the access gates.
- Gate guards should have a roster of non-Federal class participants. Tell the guard the name of your class/workshop.
- If you are driving your personal vehicle, be sure to have valid driver's license, vehicle registration and proof of liability insurance.

Directions from Main Gate

1. Exit I-5 at Camp Pendleton Exit and proceed to Main Gate
2. After clearing main gate, proceed straight ahead on Vandegrift Blvd.
3. Continue on Vandegrift Blvd ~5.5 miles from the Main Gate to the 22 Area. Warehouses on the right, flood wall on the left.
4. Turn Right onto 10th St.
5. Turn Left onto D Ave.
6. Turn Right at the Stop sign, back onto 10th
7. CNATT will be on your right. Turn into CNATT facility and drive to parking garage in back of building.

Section 7(a)(1) Conservation Planning in Southern California

